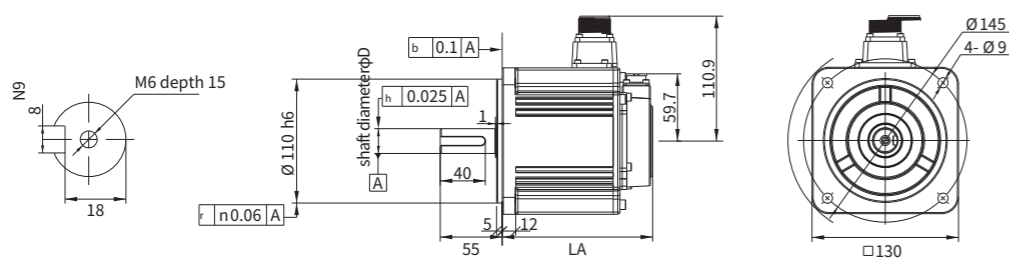


Power (kw)	Motor model	Adapted driver	Voltage level (AC)	Encoder bit	Rotor inertia [10 ⁻⁴ kg.m ²]	Rated speed (RPM)	Max speed (RPM)	Rated torque (Nm)	Max torque (Nm)
2.3KW	MS6G-130CS/CM15B2/E2-42P3	DS5C1/L1/P-42P3-PTA	380V	17	23020	1500	3000	14.6	36.5
	MS6G-130TL15B2/E2-42P3			23	23020	1500	3000	14.6	36.5
	MS6G-130CS/CM15BZ2/EZ2-42P3			17	28780	1500	3000	14.6	36.5
	MS6G-130TL15BZ2/EZ2-42P3			23	28780	1500	3000	14.6	36.5
	MS6G-130CS/CM15B2/E2-22P3	DS5C1/L1/P-22P3-PTA	220V	17	23020	1500	2000	14.6	29.2
	MS6G-130TL15B2/E2-22P3			23	23020	1500	2000	14.6	29.2
	MS6G-130CS/CM15BZ2/EZ2-22P3			17	28780	1500	2000	14.6	29.2
	MS6G-130TL15BZ2/EZ2-22P3			23	28780	1500	2000	14.6	29.2
	MS6G-130CN15B2/E2-42P3	DS5L2/C2-42P3-PTA	380V	19	23020	1500	3000	14.6	36.5
	MS6G-130CN15BZ2/EZ2-42P3			19	28780	1500	3000	14.6	36.5
	MS6G-130CN15B2/E2-22P3	DS5L2/C2-22P3-PTA	220V	19	23020	1500	2000	14.6	29.2
	MS6G-130CN15BZ2/EZ2-22P3			19	28780	1500	2000	14.6	29.2

Note: E2 motor is a special shaft diameter motor, and the special shaft diameter of 2.3kW motor is 22mm.

Motor dimension

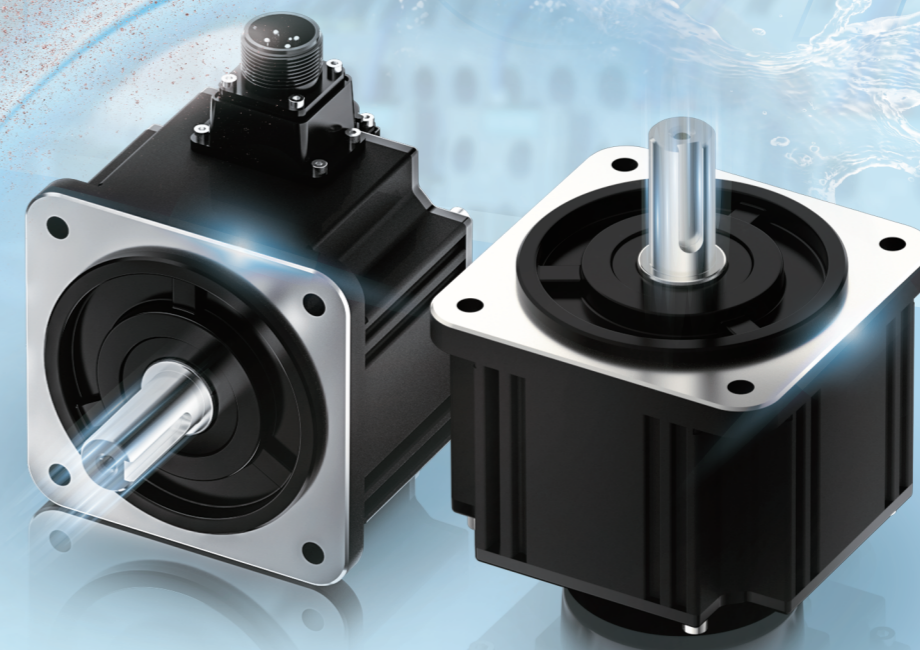
(Unit:mm)



Motor model	LA±1		Shaft diameterφD	Inertia level
	Motor model	With brake		
MS6G-130C□25B□2-□1P0	119.5	148.5	22	Medium inertia
MS6G-130TL25B□2-□1P0	136	165	22	
MS6G-130C□20B□2-□1P5	133.5	162.5	22	
MS6G-130TL20B□2-□1P5	150	179	22	
MS6G-130C□15B□2-□1P5	151.5	180.5	22	
MS6G-130TL15B□2-□1P5	168	197	22	
MS6G-130C□15B□2-□2P3	181.5	210.5	24	
MS6G-130TL15B□2-□2P3	198	227	24	
MS6G-130C□15E□2-□2P3	181.5	210.5	22	
MS6G-130TL15E□2-□2P3	198	227	22	

Shorter body Stronger protection Reliable operation

IP67



MS6G-130 series medium inertia servo motor

The best choice for compact device scenarios



XINJE

WUXI XINJE ELECTRIC CO.,LTD.

Address: No.816,Jianzhu West Road,Binhu District,Wuxi City,Jiangsu Province,China

TEL: 86-0510-85134136

Fax: 86-0510-85111290

Website: www.xinje.com

Email: sales@xinje.com

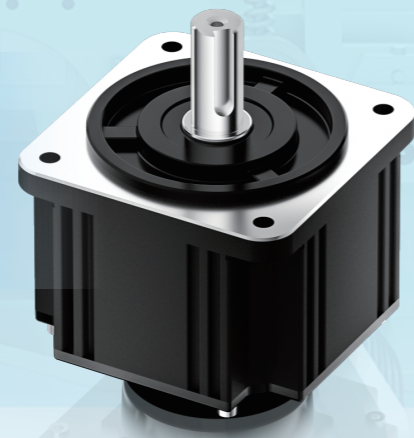
Technical Service Hotline
400-885-0136

XINJE WeChat

Automation Trusted Partner

MS6G-130 series

Medium inertia servo motor **1kW~2.3kW**



Suitable for applications such as metal processing, robotic arms, multi wire cutting, bamboo and wood processing that require motor installation dimensions or harsh motor operating environments.

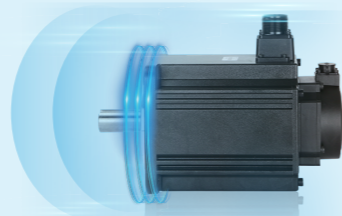
Reliable operation

Improve the overall strength and anti-vibration ability of the motor through measures such as integrating the end cover and body, improving the aviation plug fixing structure, and gluing;



Improved integration of end cover and motor body, fixed structure of aviation plug filled with adhesive

Improve the overall performance of the motor
Strength and anti-vibration capability



17-bit/19-bit/23-bit absolute value encoder is optional;

Low temperature rise and low noise.

Adapt to multiple encoders

17-bit, 19-bit, and 23-bit absolute encoders are available

Shorter body

Compared with the MS6H series high inertia synchronous motor, the MS6G series has a shorter body, about 10% shorter, making it more suitable for compact equipment scenarios; Black body, matte texture, effectively reduces the tactile temperature on the surface of the motor body.

Strong protection

The protection level of the MS6H-130 series B2 motor is IP65, and the MS6G-130 series has optimized the motor structure, improved the protection level to IP67, dustproof and water-proof, and is not afraid of harsh environments.

Note: Taking 1.5kw as an example

Naming rule

MS6G - 130 C S 20 B Z 2 - 2 1P4

① ② ③ ④ ⑤ ⑥ ⑦ ⑧ ⑨ ⑩

① Inertia type

Name	Inertia
MS6G	Medium inertia

② Flange

Name	Flange
130	130 flange

③ Encoder construction

Name	Type
C	Magnetic encoder
T	Optical encoder

④ Encoder specifications

Name	Specification
S	Single turn 17 bits
M	Multi turn 17 bits
L	Multi turn 23 bits
N	Single/multi turn integrated 19 bits

⑤ Rated speed

Name	Rated speed (rpm)
15	1500
20	2000
25	2500

⑥ Shaft specification

Name	Shaft specification
A	With key, without oil-proof, with tapped hole
B	With key, with oil-proof, with tapped hole
C	Without key, without oil-proof, with tapped hole
D	Without key, with oil-proof, with tapped hole

⑦ Power-off brake

Name	Power-off brake
Z	With brake
Blank	Without brake

⑨ Power supply voltage

Name	Voltage
2	220V
4	380V

⑩ Motor connector

Name	Connector type
2	Aviation connector

⑩ Motor power

Name	Rated power (kW)
1P0	1
1P5	1.5
2P3	2.3

Motor model list

Power (kw)	Motor model	Adapted driver	Voltage level (AC)	Encoder bit	Rotor inertia [10 ⁻⁴ ·kg·m ²]	Rated speed (RPM)	Max speed (RPM)	Rated torque (Nm)	Max torque (Nm)				
1KW	MS6G-130CS(M)25B2-21P0	DS5C1/L1/P-21P0-PTA	220V	17	8030	2500	4000	4	12				
	MS6G-130TL25B2-21P0			23	8030	2500	4000	4	12				
	MS6G-130CS/CM25B2-21P0			17	8430	2500	4000	4	12				
	MS6G-130TL25B2-21P0			23	8430	2500	4000	4	12				
	MS6G-130CS/CM25B2-41P0			17	8030	2500	4000	4	12				
	MS6G-130TL25B2-41P0			23	8030	2500	4000	4	12				
	1KW	MS6G-130CS/CM25B2-41P0	DS5C1/L1-41P0-PTA	380V	17	8430	2500	4000	4	12			
		MS6G-130TL25B2-41P0			23	8430	2500	4000	4	12			
		MS6G-130CN25B2-21P0			19	8030	2500	4000	4	12			
		MS6G-130CN25B2-21P0			19	8430	2500	4000	4	12			
		MS6G-130CN25B2-41P0			19	8030	2500	4000	4	12			
		MS6G-130CN25B2-41P0			19	8430	2500	4000	4	12			
1.5KW		MS6G-130CS(M)20B2-21P5	DS5C1/L1/P-21P5-PTA	220V	17	12140	2000	3000	7.2	18			
		MS6G-130TL20B2-21P5			23	12140	2000	3000	7.2	18			
		MS6G-130CS(M)20B2-21P5			17	14410	2000	3000	7.2	18			
		MS6G-130TL20B2-21P5			23	14410	2000	3000	7.2	18			
		MS6G-130CS/M15B2-21P5			DS5C1/L1/P-22P3-PTA	220V	17	17320	1500	2500	10	25	
		MS6G-130TL15B2-21P5					23	17320	1500	2500	10	25	
	MS6G-130CS/M15B2-21P5	17					19670	1500	2500	10	25		
	MS6G-130TL15B2-21P5	23					19670	1500	2500	10	25		
	MS6G-130CS(M)20B2-41P5	DS5C1/L1/P-41P5-PTA					380V	17	12140	2000	4000	7.2	21.6
	MS6G-130TL20B2-41P5							23	12140	2000	4000	7.2	21.6
	MS6G-130CS(M)20B2-41P5				17	14410		2000	4000	7.2	21.6		
	MS6G-130TL20B2-41P5				23	14410		2000	4000	7.2	21.6		
	MS6G-130CS(M)15B2-41P5		DS5C1/L1/P-42P3-PTA	380V	17	17320		1500	3000	10	25		
	MS6G-130TL15B2-41P5				23	17320		1500	3000	10	25		
	MS6G-130CS(M)15B2-41P5				17	19670		1500	3000	10	25		
	MS6G-130TL15B2-41P5				23	19670		1500	3000	10	25		
	MS6G-130CN20B2-21P5				DS5L2/C2-21P5-PTA	220V		19	12140	2000	3000	7.2	18
	MS6G-130CN20B2-21P5							19	14410	2000	3000	7.2	18
	MS6G-130CN15B2-21P5		19	17320				1500	2500	10	25		
	MS6G-130CN15B2-21P5		19	19670				1500	2500	10	25		
	MS6G-130CN20B2-41P5	DS5L2/C2-41P5-PTA	380V	19			12140	2000	4000	7.2	21.6		
	MS6G-130CN20B2-41P5			19			14410	2000	4000	7.2	21.6		
	MS6G-130CN15B2-41P5			19			17320	1500	3000	10	25		
	MS6G-130CN15B2-41P5			19			19670	1500	3000	10	25		